

**SUBMITTAL
DATA**



**OUTDOOR PATIO / WASH BAY /
WET ENVIRONMENT**

**IWP
SERIES
GAS-FIRED
LOW INTENSITY TUBE TYPE
INFRA RED HEATERS**

PROJECT:	
ENGINEER:	
CONTRACTOR:	
DISTRIBUTOR:	
MODEL #:	
FUEL:	Natural Gas Propane Gas
APPROVED BY:	
DATE:	
APPROVAL #:	



NOTICE:

InfraSave reserves the right to make changes to equipment and specifications without obligation or notification.

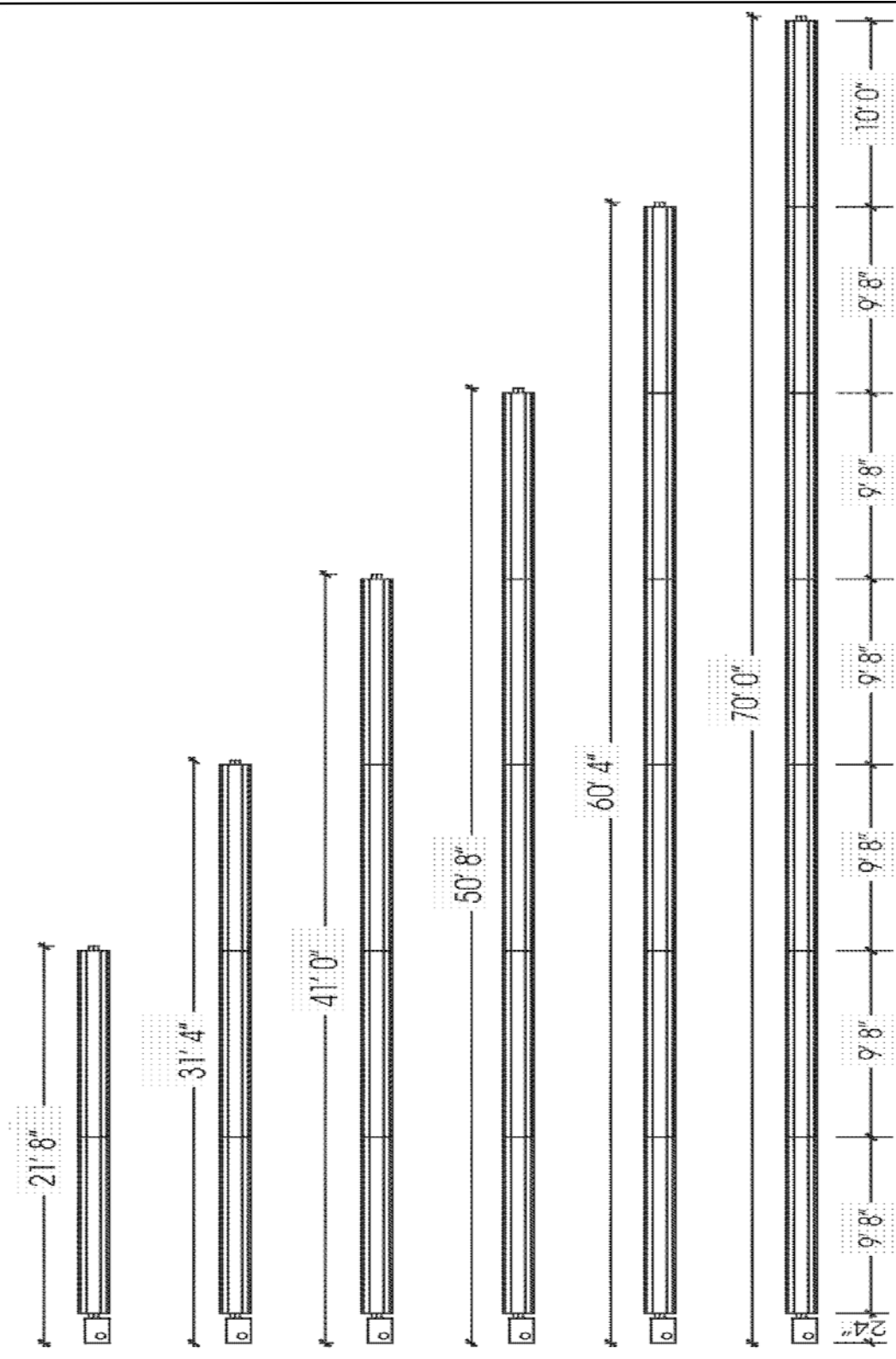
This publication, or parts thereof, may not be reproduced in any form, without prior written consent from InfraSave. Unauthorized use or distribution of this publication is strictly prohibited.

*InfraSave
Mississauga, Ontario,
Waynesboro, Georgia,
Phone: 1-866-INFRASV (463-7278)
Fax: 1-866-724-9265
<http://www.infrasave.com>
e-mail: info@infrasave.com*

Quantity On This Project	TABLE 1: MODEL CONFIGURATIONS	TOTAL HEATER LENGTH	CAPACITY BTU/HR kW	TURBULATOR	GAS PRESSURE & ELECTRICAL	FLUE & AIR VENTS	SHIPPING WEIGHT Kg (LBS.)
				REQUIRED LENGTH			
	IWP-200-70	70' 0"	200,000 Btu/hr 59 Kw	6'	LINE MINIMUM 5" W.C. NG 11" W.C. LP	4"	324 Lbs
	IWP-200-60	60' 4"		6'			282 Lbs
	IWP-200-50	50' 8"		10'			239 Lbs
	IWP-175-70	70' 0"	175,000 Btu/hr 51 kW	10'	LINE MAXIMUM NG or LP 14" W.C.	4"	324 Lbs
	IWP-175-60	60' 4"		10'			282 Lbs
	IWP-175-50	50' 8"		10'			239 Lbs
	IWP-155-60	60' 4"	150,000 Btu/hr 44 kW	2'	MANIFOLD 3½" W.C. NG 10" W.C. LP	4"	282 Lbs
	IWP-155-50	50' 8"		2'			239 Lbs
	IWP-155-40	41' 0"		12'			197 Lbs
	IWP-130-50	50' 8"	125,000 Btu/hr 37 kW	2'	½" NPT GAS INLET	4"	239 Lbs
	IWP-130-40	41' 0"		12'			197 Lbs
	IWP-130-30	31' 4"		13'			154 Lbs
	IWP-110-50	50' 8"	110,000 Btu/hr 32 kW	2'	ELECTRICAL 120V, 60 HZ 145 VA	4"	239 Lbs
	IWP-110-40	41' 0"		12'			197 Lbs
	IWP-110-30	31' 4"		13'			154 Lbs
	IWP-80-40	41' 0"	80,000 Btu/hr 23 kW	12'	THERMOSTAT Factory ready for 24V or 120V thermostat	4"	197 Lbs
	IWP-80-30	31' 4"		8'			154 Lbs
	IWP-80-20	21' 8"		14'			111 Lbs
	IWP-60-30	31' 4"	60,000 Btu/Hr 18 kW	8'		4"	154 Lbs
	IWP-60-20	21' 8"		14'			111 Lbs
	IWP-45-20	21' 8"	45,000 Btu/hr 13 kW	14'		4"	111 Lbs

TOP VIEW OF IWP TUBE SYSTEMS

QTY

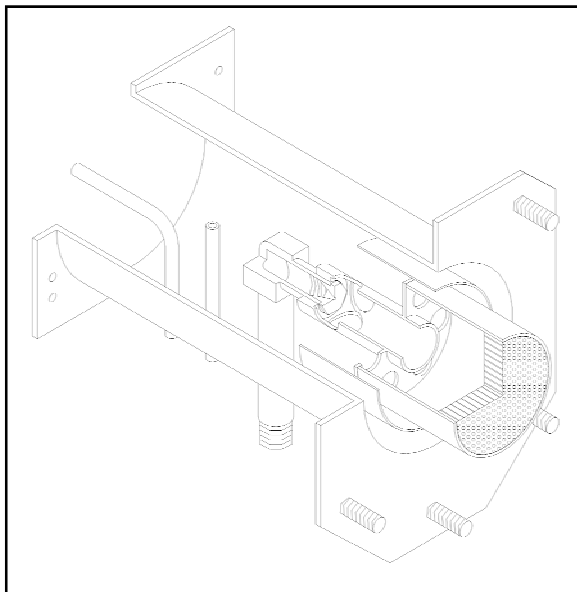


<u>COMPONENT QUANTITIES PER HEATER MODEL</u>	<u>IWP 45-20</u>	<u>IWP 60-20 80-20</u>	<u>IWP 60-30 80-30 110-30 130-30</u>	<u>IWP 80-40 110-40 130-40 155-40</u>	<u>IWP 110 -50 130- 50 155- 50</u>	<u>IWP 175 -50 200- 50</u>	<u>IWP 155 -60</u>	<u>IWP 175 -60 200- 60</u>	<u>IWP 175- 70 200- 70</u>
QUANTITIES ON PROJECT									
SWAGED TUBE(S):									
10' STAINLESS STEEL w/ FLANGE	0	0	0	0	0	1	0	1	1
10' ALUMINIZED STEEL w/ FLANGE	1	1	1	1	1	0	1	0	0
10' ALUMINIZED STEEL	0	0	0	0	0	1	0	1	1
10' ALUMINIZED w/ EMISSIVE COATING	1	1	2	3	4	3	5	4	5
FOCUS SHIELD REFLECTOR (9' 8")	2	2	3	4	5	5	6	6	7
ALUMINIZED COUPLER	1	1	2	3	4	4	5	5	6
END WEBBED PLATE HANGER	2	2	2	2	2	2	2	2	2
TUBE / REFLECTOR WEBBED HANGER	1	1	2	3	4	4	5	5	6
REFLECTOR STABILIZER	6	6	9	12	15	15	18	18	21

NOTE:

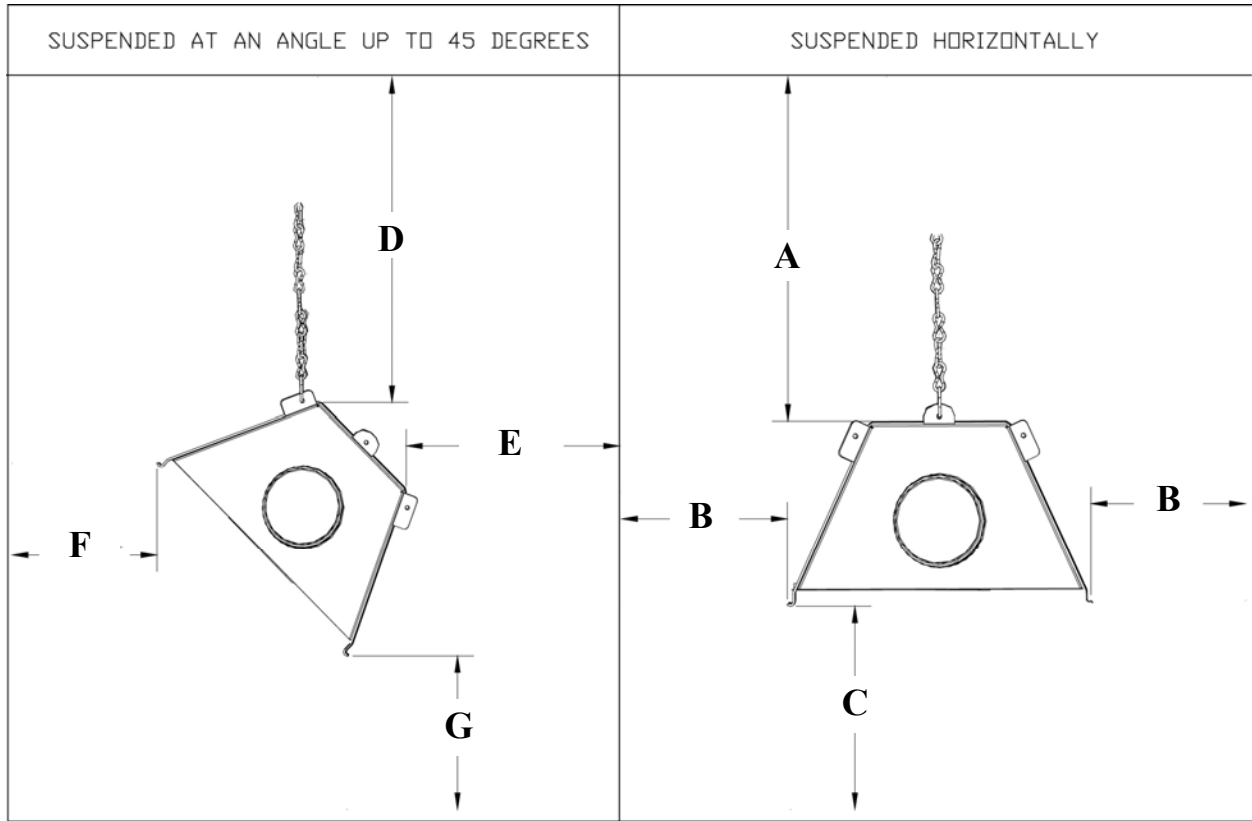
- CANADA: TYPE 1 HOSE GAS CONNECTOR IS INCLUDED WITH EACH BURNER KIT
1/2" X 30" 45,000 TO 130,000 AND 3/4" X 30" = 150,000 TO 200,000
- USA : FLEXIBLE GAS CONNECTOR IS INCLUDED WITH EACH BURNER KIT
1/2" X 24" 45,000 TO 130,000 AND 3/4" X 24" = 150,000 TO 200,000

CUT-AWAY BURNER VIEW



<u>OPTIONAL ACCESSORIES</u>	QUANTITY ON THIS PROJECT
90 DEGREE SWAGED ELBOW KIT JS-0508-JZ 1 elbow, 1 reflector cap, 1 webbed hanger, 1 coupler	
180 DEGREE SWAGED ELBOW KIT 2 x JS-0508-JZ 2 x 90 degree elbow kits - 2 webbed hangers, 2 couplers	
WALL VENT TERMINAL 4" (102 mm) JA-0528-XX	
WALL VENT TERMINAL 6" (152 mm) JA-0529-XX	
FLUE VENT TEE (4" x 4" x 6") JA-0514-XX	
COUPLING KIT FOR VENT TEE JA-0516-SW	
MOISTURE PROOF THERMOSTAT - NEMA 4X JS-0570-XX	
RELAY MULTIPLE HEATERS / 24V THERMOSTAT 2 TO 7 HEATERS PER THERMOSTAT JM-0303-KT	

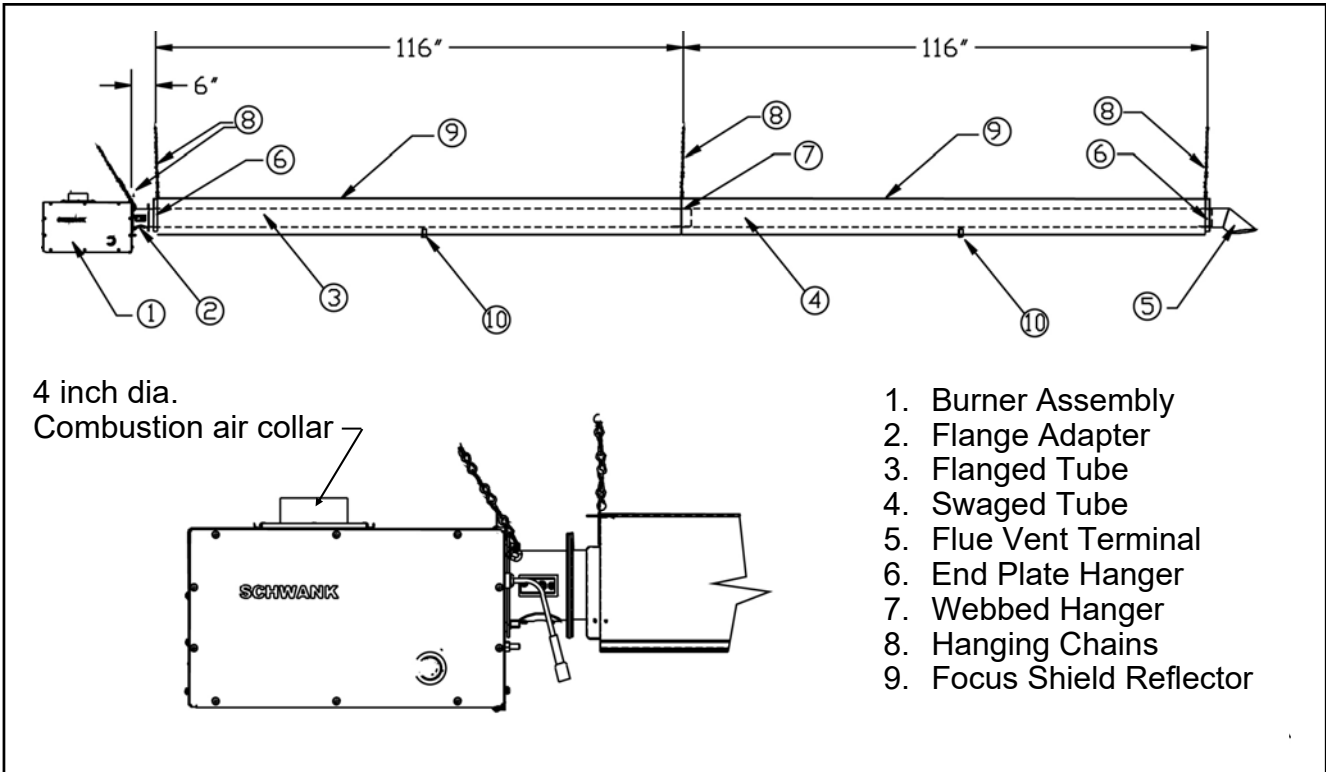
MINIMUM CLEARANCES TO COMBUSTIBLES



QTY	MODEL	SUSPENDED AT AN ANGLE UP TO 45 DEGREES				SUSPENDED HORIZONTALLY		
		D	E	F	G	A	B	C
	IWP-200	6.5"	1"	57"	68"	6"	22"	68"
	IWP-175	5.5"	1"	47"	68"	4.5"	20"	68"
	IWP-155	5.5"	1"	44"	64"	3.5"	19"	64"
	IWP-130	4.5"	1"	35"	56"	3.3"	11"	60"
	IWP-110	3.5"	1"	26"	54"	2"	10"	54"
	IWP-80	3"	1"	23"	38"	1.75"	6.0"	36"
	IWP-60	2.5"	1"	17"	34"	1.5"	5.5"	34"
	IWP-45	2.75"	1"	24"	32"	2.25"	7"	32"

The clearances to combustibles are established at points reaching a surface temperature of 160⁰ F. Some materials such as awnings or plastic may require higher distances. Respect clearances as shown above.

TYPICAL HANGER & SUPPORT SPACING RECOMMENDATIONS



REFLECTOR STABILIZER

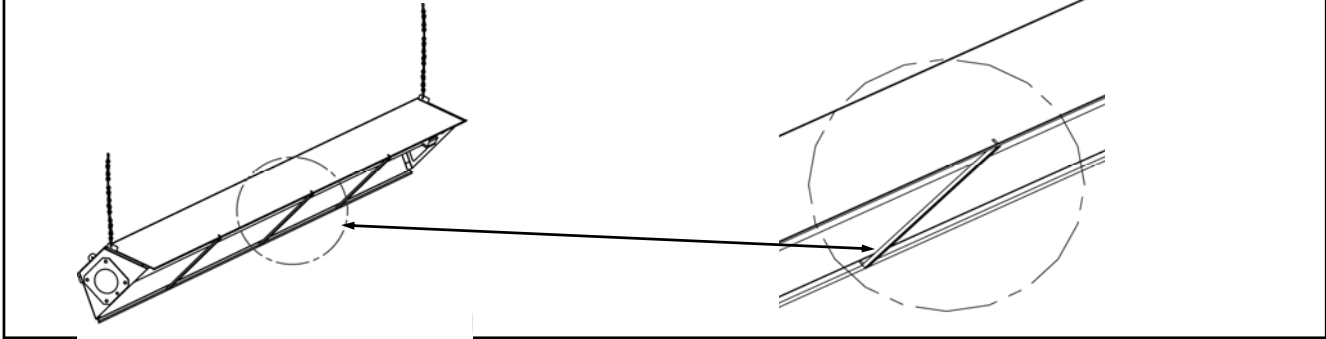
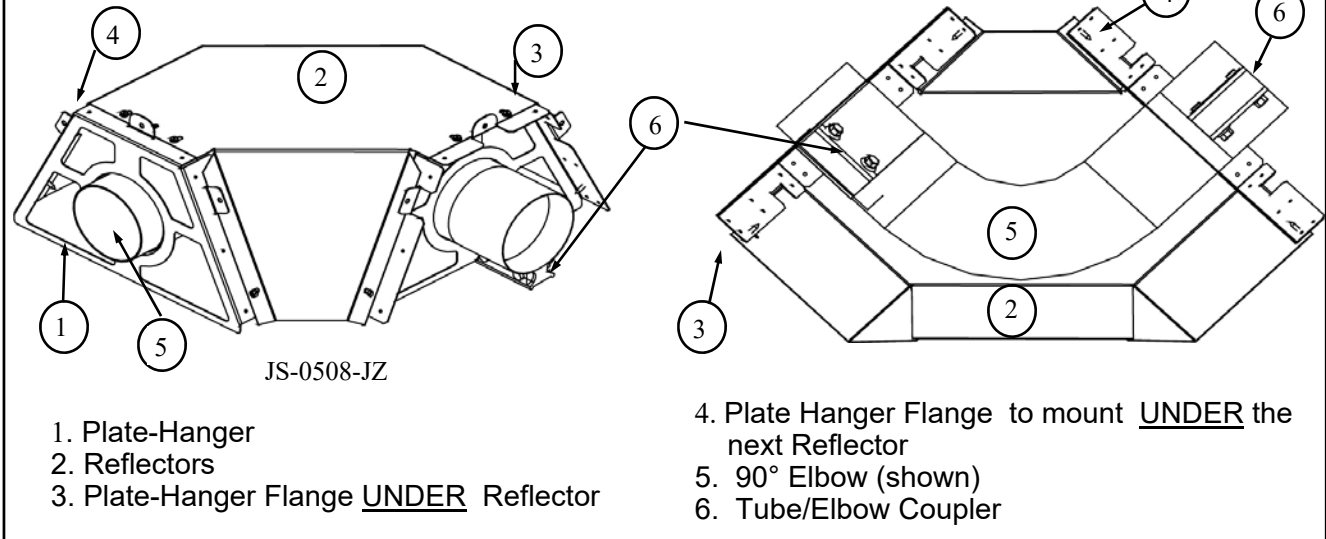


PLATE HANGER/ELBOW INSTALLATION



COMPONENT DESCRIPTION

IGNITION	POTTED DIRECT SPARK MODULE
THERMOSTAT OPTIONS	NEMA 4X MOISTURE PROOF THERMOSTAT
	THERMOCONTROL PLUS
	FIELD SUPPLIED THERMOSTAT BY OTHERS
ELBOWS	90 DEGREE ELBOW 4" DIAMETER, 16 GA. ALUMINIZED STEEL, SWAGED ONE END
	180 DEGREE ELBOW 4" DIAMETER, 16 GA. ALUMINIZED STEEL, 19" ON CENTRE (ASSEMBLY OF TWO 90 DEGREE ELBOW KITS)
HEATER TUBE(S) 45 to 155 MBH	COMBUSTION TUBE: FLANGED 10' x 4" DIAMETER 16 GA. ALUMINIZED STEEL SWAGED ONE END SECOND TUBE: 10' x 4" DIAMETER 16 GA. ALUMINIZED STEEL SWAGED ONE END EACH ADDITIONAL TUBE: 10' x 4" DIAMETER, .16 GA. ALUMINIZED STEEL TUBES WITH HIGH TEMPERATURE EMISSIVE COATING, SWAGED ONE END
HEATER TUBE(S) 175 & 200 MBH	COMBUSTION TUBE: 10' x 4" DIAMETER, 16 GA. 439 STAINLESS STEEL SWAGED ONE END SECOND TUBE: 10' x 4" DIAMETER, 16 GA. ALUMINIZED STEEL SWAGED ONE END EACH ADDITIONAL TUBE: 10' x 4" DIAMETER, 16 GA. ALUMINIZED STEEL WITH HIGH TEMPERATURE EMISSIVE COATING SWAGED ONE END
COMBINATION GAS VALVE	HONEYWELL 24 VOLT NATURAL GAS: 3 1/2" W.C. MANIFOLD PROPANE: 10" W.C. MANIFOLD
REFLECTORS	REFLECTORS EXTEND 1.5" BELOW BOTTOM OF TUBE SURFACE
	REFLECTORS ARE CLOSED AT START AND END OF EACH STRAIGHT RUN OF TUBES BY MEANS OF END PLATE HANGERS
HANGERS	ONE WEBBED HANGER SUPPORTS EACH 10' OF TUBE, EXCEPT THE FIRST AND LAST TUBES WHICH UTILIZE ONE WEBBED HANGER AND ONE PLATE HANGER AT EACH END .
COUPLING KIT	ALUMINIZED STEEL COUPLER
BURNER HOUSING	POWDER COATED WATER RESISTANT
BURNER	INCORPORATES EFFECTILE CERAMIC BURNER HEAD WITH MINIMUM OF 835 FLAME PORTS
TRANSFORMER	120/24VAC; 20VA
SAFETY SWITCHES	TWO SEPARATE AIR PRESSURE SWITCHES SENSE SUFFICIENT COMBUSTION AIR AND BLOCKED FLUE CONDITION
STATUS INDICATOR LIGHTS	GREEN: POWER TO UNIT; YELLOW: IGNITION TRIAL; RED: FLAME ESTABLISHED
COMBUSTION AIR	COMBUSTION AIR DUCTED DIRECTLY TO INTAKE OF BLOWER
TERMINAL BLOCK	ALL WIRING CONNECTIONS BY MEANS OF COMMON TERMINAL BLOCK; JUMPER: FOR 120V THERMOSTAT; REMOVE FOR 24V THERMOSTAT
ELECTRICAL CORD	4' LENGTH 16/3 ELECTRICAL SUPPLY CORD WITH 3 PIN GROUNDED PLUG